



LLB (Hons) Part-time and Open Learning



Northumbria Law School

Northumbria Law School
Law in Practice

www.northumbrialawschool.co.uk

Northumbria Law School... Law in Practice

Welcome to Northumbria – one of the most famous law schools in the UK. Northumbria is justifiably renowned for its unique undergraduate programmes, and for the excellence of its range of postgraduate and vocational law programmes which include the Graduate Diploma in Law, the Legal Practice Course and the Bar Professional Training Course.

What makes Northumbria Law School so special is its focus on Law in Practice – the learning of law through the understanding of law as it operates in practice. Out of almost 90 academic staff, more than 70 are qualified as solicitors or barristers – with considerable (often continuing) experience of practice. All of us are committed to ensuring that our students learn Law and Legal Practice in a way that equips them for careers as legal professionals in the huge range of different roles that lawyers can occupy in our society.

The School is not only distinctive for the excellence of our teaching – and our commitment to the highest standards of student experience – but for the outstanding quality of our resources. The School is part of the award-winning City Campus East, in the heart of Newcastle.

Based in a £70 million building, we are justifiably proud of our facilities, with stunning state-of-the-art lecture theatres, dedicated courtrooms (with all the video-link facilities that are increasingly found in the modern courts in practice), our skills suites, and our superb Law Practice Library.

The intake of students across all our courses reflects the national and international reputation of the School – with students from across the UK and from all the major



common law jurisdictions. The students comment on the high levels of support and encouragement from the staff, and the commitment by the School to supporting their studies. By making full use of e-Learning and other modes of distance learning provision, we have designed courses that support full-time students, while opening up access to qualifications for students who have work or life commitments which mean that they need the flexibility of part-time and distance-learning studies.

I look forward to welcoming you onto our undergraduate law courses.

Professor Philip Plowden (Dean)

A Law School for the 21st Century

Northumbria Law School is located on a modern, state-of-the-art £70 million development in central Newcastle – City Campus East. Completed in September 2007, the building is a prominent landmark within the city, and offers a world class learning and social facility.

The Law School, which shares its building with Newcastle Business School, incorporates 16,000 square metres of purpose-built accommodation including three large state-of-the-art lecture theatres and workshop rooms equipped with the latest technology, as well as student hub areas. There are courtrooms modelled on those that students will experience as qualified practitioners, with the ability to use technological developments to be found in a modern court. The School's original courtroom, installed courtesy of South East Northumberland Magistrates, has been reconstructed in the futuristic building.

A specialist law library contains practitioner materials, journals and law reports and, in addition, students have access to IT and wireless facilities throughout the building and both study and social space, including a cafeteria.

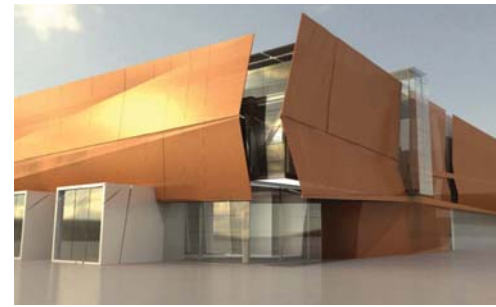
The building also houses the School's internationally renowned Student Law Office, which continues to provide students with the opportunity to provide legal advice and representation to members of the public and thus experience life as a professional lawyer.

The futuristic and environmentally friendly design includes a light well in the middle of the building allowing natural light to flood in, reducing the need for artificial lighting. Solar panels shade the building

The Law School at night



Artist's impression of new sports facilities



and reduce the need for heating by 50%. The building's carbon emissions have been reduced by 40% of the current standard, and 95% of the original cinema which previously stood on the site was recycled during construction.

The University's overall £135 million campus redevelopment is its largest investment programme to date and demonstrates Northumbria's commitment to its future success and that of its students. Work is now underway at City Campus West to develop the existing facilities and build a new sports centre.

The new sports facility will provide some of the most outstanding fitness and training facilities in the country. The centre will offer a 25 metre pool with a variable depth floor, a sports hall provision equivalent to the size of four netball courts, a Health and Fitness suite with more than 150 pieces of the highest spec Technogym equipment, a climbing wall, glass backed squash courts, a dedicated strength and conditioning suite, a 60 metre sprint track and specialised training environments for a number of different sports. At the heart of the facility is an indoor arena, fully media-enabled and with over 2,600 seats.

The striking new development is due to open to students, staff and members of the community in 2010.

Why choose Northumbria Law School?

- We are the largest Law School in the North East of England and have a national and international reputation for excellence in legal education
- We have over 30 years' experience of providing part-time and open learning legal education
- We are the only University in the UK to offer a five year Solicitor's Full Qualification route enabling students to graduate as fully qualified solicitors
- We are based in the heart of Newcastle upon Tyne – a first class student city – and have invested £70m on a futuristic new building which opened in September 2007
- Our M Law programmes equip students with a masters level qualification while at the same time achieving a qualifying Law degree and exemption from the Legal Practice Course
- Our LPC received the highest possible rating across all of the monitoring categories in the most recent Solicitors Regulation Authority visit
- We have a philosophy of combining academic development with practical experience
- We have a groundbreaking Student Law Office – the largest scheme of its kind in the UK where law students advise and represent members of the public with real legal problems
- We have specially designed courtrooms equipped with DVD recording facilities, enabling students to gain real-life exposure to what they can expect to experience in a courtroom scenario
- You will be taught by professionally qualified academic tutors with experience in corporate and high street practice and the School maintains close links with the legal profession
- We have developed a wide range of innovative Masters programmes on a distance learning basis, providing a flexible approach for those with career and family commitments
- You will have the opportunity to participate in a range of activities including moots or mock trials
- We have the largest student society in the University, the Grey Society.



Why should I study law?

Law dominates our lives, whether we are buying goods in a shop, going to work, purchasing a house, involved in an accident or seeking to arrange a pension. The newspapers report daily on events of legal significance, such as Parliament passing new legislation or the need for new laws or some development involving the European Union. To understand any of these matters it is important to understand the law and the legal system.

This degree aims to give students an understanding of the English legal system in its European context, the diverse areas of law contained within that system and the methods adopted by lawyers in using legal source material. Throughout the programme, emphasis is placed on student-centred learning, supported by both paper and electronic materials, to foster research skills and initiative. The School recognises the importance of developing practical skills which will enhance employability and be built upon in the workplace or during further education. Opportunities to develop these skills are integrated throughout the programme and students are also encouraged to

participate in the various student societies' activities. By following this degree programme you have an opportunity to explore the law and this can be a springboard for career change or career development.

What can I do with a degree in law?

The degree is a qualifying degree which means that it exempts students from the academic stage of legal education to become a solicitor or barrister. Once the degree is completed you may apply for admission to the Legal Practice Course (LPC), the vocational stage of legal education to become a solicitor, or the Bar Professional Training Course (BPTC), the vocational stage of legal education to become a barrister (to enrol on the BPTC you must achieve at least a second class (lower division) degree).

You will also discover that many forms of employment have a significant legal content. For example, an understanding of law is important for Surveyors, Company Secretaries, Local Government Officers, Civil Servants and the Police.

The LLB (Hons) Part-time programme

The LLB (Hons) Part-time degree is a flexible 4–6 year programme. The degree is taught on Tuesday and Thursday evenings, between 6.00–9.00pm and 6.00–8.30pm respectively, in the Law School, which is located on Northumbria University's City Campus East.

How is the programme taught?

Teaching comprises lectures and small group discussions called seminars. A seminar is based upon a question which is prepared by students in advance of the session and which is then discussed with a tutor and fellow students. In Years 1 and 2 of the programme there are also Study Skills sessions every week concentrating on legal and other skills such as research, writing, examination technique and the use of computers. You may also take part in a mock trial or a moot in these sessions.

What is the time commitment for this programme?

Teaching sessions last for 5–6 hours per week; to this there must be added time spent by students researching, reading, writing and preparing one seminar per week. It is difficult to put a figure to this added time but 15 hours is a number mentioned by many former and present students. You must set aside sufficient time each week to read around the three lectures and prepare in sufficient depth the seminar set. When assignments are due for submission, you may find that you have to spend additional time on your studies.

What if my circumstances change and I cannot attend the LLB Part-time sessions?

Students sometimes find that having enrolled on the LLB (Hons) Part-time programme that their circumstances change, for example, their job or working pattern changes, or that they have to move to another part of the country. Should such a change occur it is possible to continue your degree studies by transferring to the LLB (Hons) Open Learning route, which has the same structure as the LLB (Hons) Part-time route, but is taught using distance learning study materials and internet resources.



The LLB (Hons) Open Learning programme

The LLB (Hons) Open Learning degree is a flexible 4–6 year programme. There is no attendance requirement for the Open Learning programme. Learning is developed through study materials delivered over the Internet; therefore you must have access to a computer with Internet accessibility. Each module has a set of materials, a study schedule and answer guidance and is supported by an eLearning Portal site. Notes, Powerpoint slides, answer guides and updates will be posted on module sites, and depending on the particular module studied you may also be provided with recorded lectures and interactive materials, via the eLearning Portal. Access to legal databases allows you to read primary legal sources, i.e. legislation and cases and secondary sources, such as articles and commentaries.

What support is given to Open Learning students?

The LLB (Hons) Open Learning programme is designed to be completed entirely on a distance learning basis. You will be assigned module tutors who are contactable by telephone, fax, email or, if possible, on a face-to-face basis. The study materials are structured to enable you to submit written work in order to receive feedback and advice. This feedback is an integral part of your learning experience and you are encouraged to submit work of this type on a regular basis.

What is the time commitment for this programme?

It is important to adopt a disciplined approach to your studies on the LLB (Hons) Open Learning programme as you will have to follow the study schedule for each module, which sets targets for each week. To achieve this, you will have to spend approximately 20 hours per week on your studies.

If my circumstances change am I able to transfer to the LLB Part-time programme?

If your circumstances change and you would like to follow the taught part-time programme it is possible to transfer.

Must I come to Newcastle to sit the end of year examinations?

The main examination centre is Northumbria University in Newcastle, but it is possible to sit examinations overseas and if there is sufficient student demand, at an examination centre in London.

How long will the degree take?

The degree is structured flexibly so you can spread your studies over 4, 5 or 6 years. Many students complete the degree in four years, taking three modules per year. However, students who are returning to education after a break may choose to study one or two modules in year one.



What will I study on the Part-time and Open Learning degrees?

The degrees consist of 12 modules, typically three in each year. The diagram below outlines the structure of the programme.

Year 1	English Legal System	Contract	Criminal Law
Year 2	European Union Law	Property 1	Tort
Year 3	Public Law	Property 2	Option
Year 4	Option	Option	Jurisprudence or Project

Is there a choice of modules?

In Years 3 and 4, students have a choice of modules. The options include:

- **Company Law**
- **Employment Law**
- **Evidence**
- **Family Law***
- **Intellectual Property Law†**
- **Jurisprudence**
- **Medical Law**
- **Project (6-8,000 words)**

* Available only on PT programme

† Available only on OL programme; PT students may opt to study this module via OL methods

The availability of options in any year will depend upon there being sufficient student demand.

How is the programme assessed?

The programme is assessed by a mix of assignments and end of year examinations.

What are the fees for the LLB programme?

The fees are fixed for the duration of the programme. Please see the separate sheet for the current fees structure.

What facilities are available to me?

Once enrolled on the LLB programme you are entitled to all of the benefits available to students of Northumbria University. You will have access to all of the University facilities, including the libraries, Student Services, careers advice and the sporting facilities. Importantly within the Law School you will be given access to legal databases available via the Internet. Additionally, the University has an eLearning Portal on which you will find lecture materials, Powerpoint slides, recorded lectures and other resources.

Can I study for a Certificate or Diploma in law rather than commit to the whole degree programme?

Yes, it is possible to study only certain law modules. To be eligible for a Certificate any combination of four subjects will suffice, but students normally study:

- **Contract Law**
- **Criminal Law**
- **English Legal System**
- **a fourth subject of their choice.**

To be eligible for a Diploma students must study a further four subjects from the following list:

- **European Union Law**
- **Tort**
- **Public Law**
- **Property 2**
- **Employment Law**
- **Evidence**
- **Company Law**
- **Medical Law**
- **Family Law***

* Available only on PT programme

These programmes allow students to develop an understanding of the fundamental principles of English law and then to specialise in particular areas of law.

Upon completion of a Certificate or Diploma, students may transfer to the LLB degree programme, carrying the passes already achieved.

If I have a degree can I finish the programme in a shorter period than four years?

If you have a degree or a qualification which is equivalent to a degree you may be eligible for either full or partial advanced standing. With full advanced standing you will be able to complete the LLB degree in three years. Further details may be obtained from the Programme Leader. Additionally if you have recently studied law at degree level you may be able to obtain exemption from certain subjects.

How do I obtain a place on the programme?

The programme is open access and is designed to encourage wider access to those who do not have traditional educational qualifications. Applicants must be able to show a high level of motivation, discipline and the necessary intellectual ability required to complete the degree programme. This may be demonstrated by:

- **Relevant experience, e.g. work, community activities**
- **Formal educational qualifications**

Applicants for whom English is not their first language, should have an English Language score of 6.5 on IELTS (or equivalent) or have previously studied in English. Applications can be made on the standard

Come and Judge us for Yourself

Open Events

The School holds a number of Open Events throughout the year, giving prospective Open Learning and Part-time LLB students the opportunity to visit Northumbria, view our state-of-the-art facilities, meet the academic staff and take part in sample lectures.

Visit our website for dates and further details about forthcoming Open Events www.northumbrialawschool.co.uk

University application form for return to Law Admissions. The application form is available by contacting la.information@northumbria.ac.uk or 0191 227 4494. Online applications can be made via the Law School's website www.northumbrialawschool.co.uk.

I'm concerned that I will not be able to cope with degree level study

Degree level study requires good study skills, time management, discipline and an ability to work independently. Teaching on the law degree assumes no prior knowledge of the law and you will be guided, particularly during Year 1, as to what you should be studying. The lecturers and seminar tutors will be available to answer questions by email, telephone or on a face-to-face basis where possible. During the programme academic staff are happy to provide advice on issues such as choosing options, choosing project titles and future career or study opportunities, as well as providing help with general problems affecting your study or with specific study problems.

Personal Tours

If you are unable to make one of our Open Events, we are happy to give you a personal tour of the Law School, where again, you can meet the staff and take part in teaching sessions.

Please contact the Law School Marketing Team on 0191 243 7035 or email la.marketingenquiries@northumbria.ac.uk to arrange a visit.



student

Lorraine Vincent

LLB Hons
Research Centre
Co-ordinator/Administrator

NU What appealed to you about Northumbria University?

LV With working full-time I was looking to study law on a part-time basis. Northumbria provided the flexibility I needed to fit it in with my schedule as well as providing great facilities – the Law School at Northumbria has a great reputation.

NU What was it about the course that particularly appealed?

LV This course provides a wide range of topics that will be discussed over the years. It has also allowed me to choose topics in my 3rd and 4th year that I was particularly interested in.

NU Have you found it difficult to balance your workload with your studies and home life?

LV To balance the workload I have made sure I set aside time every week to prepare for upcoming lectures and seminars.

NU In what way has your study been useful or meaningful in your work?

LV Before I started this course I was finding that my career path was very narrow. Many people think that doing this course results in you becoming a solicitor or barrister. However, the opportunities are far wider! I have been able to move positions within the same organisation, into a job I love and who knows where it will end?

NU What do you do when you're not studying?

LV You will either find me in the gym or socialising. However, as a reward for the hard work I am doing I have the occasional shopping trip.

NU What would you say to someone wanting to do your course?

LV Even though there is a lot of work involved, the benefits at the end are worth it.



A law unto themselves

Three generations of one crime-fighting family are studying law at Northumbria University.

Henry "Harry" Henson, who is in his eighties, is sharing lecture theatres with his son Michael, and granddaughter Ruth Robinson.

Partially-sighted retired policeman Harry is currently studying on the Part-time LLB Honours law degree at Northumbria University's Law School, and his success spurred his son into applying to the same family-friendly course.

Harry, from Durham, said: "My wife, Edna, passed away after 52 years of marriage.

"I decided to apply because I had always been interested in law and I wanted to keep my mind active and capable."

Harry, who served in the RAF as a young man before working for Durham Police, has been allowed to record lectures and dictates his exam answers to a scribe.

Michael, from Newton Hall, in Durham City, and Ruth, from Esh Winning, County Durham, will both move up to their third year this September.

Michael, who retired after thirty years' service with Durham Police, might go from putting criminals away to defending them in court when he completes his degree.

He said: "I've always had a great interest in criminal law and when my dad joined the course I thought it would be nice for me to go along and keep him company. Then my daughter applied and told me she would be joining me.

"It's difficult for my dad being partially-sighted but the lecturers have been marvellous. He records the lectures and plays them over and over and he has special software that scans the text books and reads them aloud.

"And I think my daughter's achievement is greater than mine to get through the first two years. She has three young children at home but still manages to study."

He added: "The University gave my dad a chance - they didn't turn him



away because of his age or his partial sight. I think the facilities are second to none. The law libraries and the computer facilities are marvellous. The lecturers are very understanding. They know we are coming into this as beginners."

Ruth said: "I've been interested in law for years and being home with the children I thought it was a good time to start a degree while I'm not working.

"I've really enjoyed my first two years. It's been difficult but my husband Kevin is understanding and he takes over looking after the children when I need to study."

Michael added: "The camaraderie between the students is marvellous. It's like a special club.

"I don't know what I would do if I missed the lectures. The only one I haven't attended was when I was in Barcelona with my wife Rita for our wedding anniversary."

Newcastle upon Tyne

As well as being dubbed the eighth best party city in the world, NewcastleGateshead is regarded, according to Newsweek, as one of 'the world's new cultural Meccas'. The city has developed from a student and party city to a vibrant creative and cultural centre that attracts all sorts of people interested in living and working in a modern European city. With several theatres, music, opera and dance venues and cinema complexes, there is plenty to exercise your brain cells too! Full of museums, galleries, and sculptures, Newcastle has lots to experience. BALTIC, The Centre for Contemporary Art is NewcastleGateshead's equivalent to the Tate Modern. There is also the well-known *Angel of the North* designed by Antony Gormley and Thomas Heatherwick's *Blue Carpet* means you can have modern art under your feet, literally!

Socialising

Newcastle has masses of bars, restaurants, pubs and clubs – from the stylish Quayside and the popular city centre, to trendy Osborne Road in Jesmond, the perfect place to sit outside in summer to enjoy a glass of wine. Newcastle is full of restaurants, and coffee shops, to suit all tastes, cultures and budgets. In terms of sport, Newcastle has a world famous football team, Newcastle United FC. There are also top sports matches, rugby, netball, lacrosse, hockey, etc. and Newcastle plays host to the Great North Run every year.

Music venues include the Metro Radio Arena, Newcastle City Hall, the Carling Academy and the Sage Gateshead, an outstanding music facility for all kinds of live music and a pioneering centre for music education. It also houses the internationally acclaimed Northern Sinfonia – the North East's own orchestra.

Legal Community

The North East legal community has a justified reputation for the breadth and depth of its work and provides a comprehensive range of legal services of the highest standard. The work of the firms and chambers in the region is viewed as both progressive and innovative. The North East, including Cumbria to the West, Berwick to the North and down to Teesside and beyond in the South, provides the prospective trainee or qualified practitioner with a wide range of opportunities. There are firms with regional, national and international reputations which have clients across the whole of the UK and internationally. There

are also smaller practices that have developed niche specialisms and expertise to rival the best available. Whether you are looking to gain experience in the corporate or the public sectors, with private clients, with financial institutions or with educational establishments, there is work for you in the North East. Perhaps your preference is to handle personal injury or clinical negligence cases or to become involved in immigration or trade union work. If so, there are openings for you too. For those with an eye to the Bar, the North East has a number of leading chambers and several smaller sets, covering all of the main areas of practice, in addition to a number of important specialist areas. Indeed, the busy Crown Court on Newcastle's Quayside presents opportunities to study leading and junior counsel in action on both high profile and mainstream cases, whilst the various sets of chambers allow for practical experience to be gained in a supportive yet challenging environment. Whichever way you look at it, the opportunities are here in the North East and in its thriving legal community.

Transport Links

Newcastle has a modern Metro system which is the envy of the rest of the UK. Linked with the bus service, the Metro makes getting around cheap, fast and efficient. By road, the A1 links Newcastle with London to the south and Edinburgh to the north. The A69 joins Newcastle to the M6 which serves the west of the country and Newcastle itself is car-friendly with lots of parking available. You can travel easily from most cities by train to Newcastle's Central Station and there is a high speed service to London and Edinburgh. Newcastle has an International Airport which operates both domestic and international flights and there are also National Express coach services.





www.northumbrialawschool.co.uk

Copies of this publication are available in alternative formats such as braille, large print, tape or disk. In the first instance please contact Karen Newton (Disabilities Adviser) for details.

Tel: 0191 227 3385 Email: karen.newton@northumbria.ac.uk
Northumbria University is the trading name of the University of Northumbria at Newcastle.

270862K/8/09